

PORTFOLIO

Kirsten Lumsden



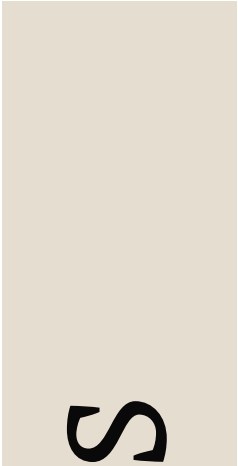
PROGRAM

OFFICE

PORTFOLIO

About Me

When it comes to design I am an empathizer, advisor, thinker, peacekeeper, and self-believer. These are strengths and values that will always be part of my design approach and when working with clients. With that, it is my primary goal to create beautiful and functional living environments. I am a creative with a passion for freedom of expression. My passion for design came from my grandfather. He was an architect and I have always felt called to follow in his footsteps. My designs are reflective of and energized by meaningful, complex, introspective conversations and concepts. Other influences that inspire my work include a background in fine arts, extensive travel and study abroad experience, and a genuine passion to keep learning and growing. While I have a lot to learn, I am dedicated to showcasing energy, bold ideas, confidence, and a substantial design background within my work.



Contents

Introduction

Fine Art

Perspective Drawings

Concept Boards

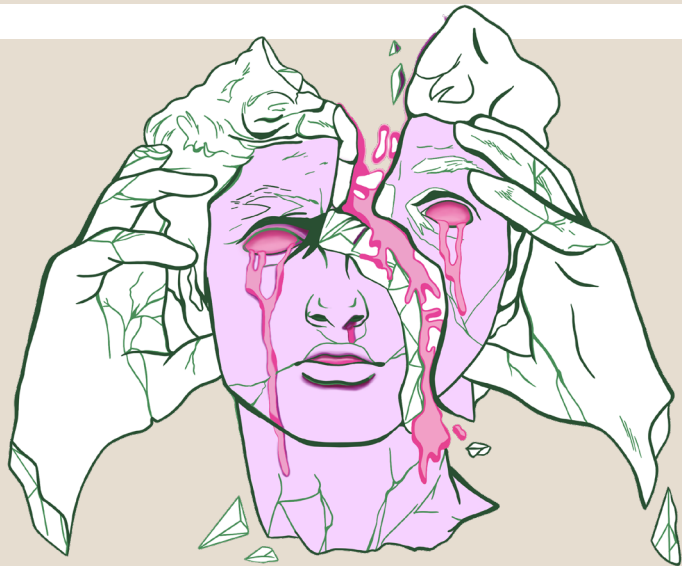
Noteworthy Projects

Real World Design



— **Bringing a Fine Art**
— **Background to Interior**
— **Design**

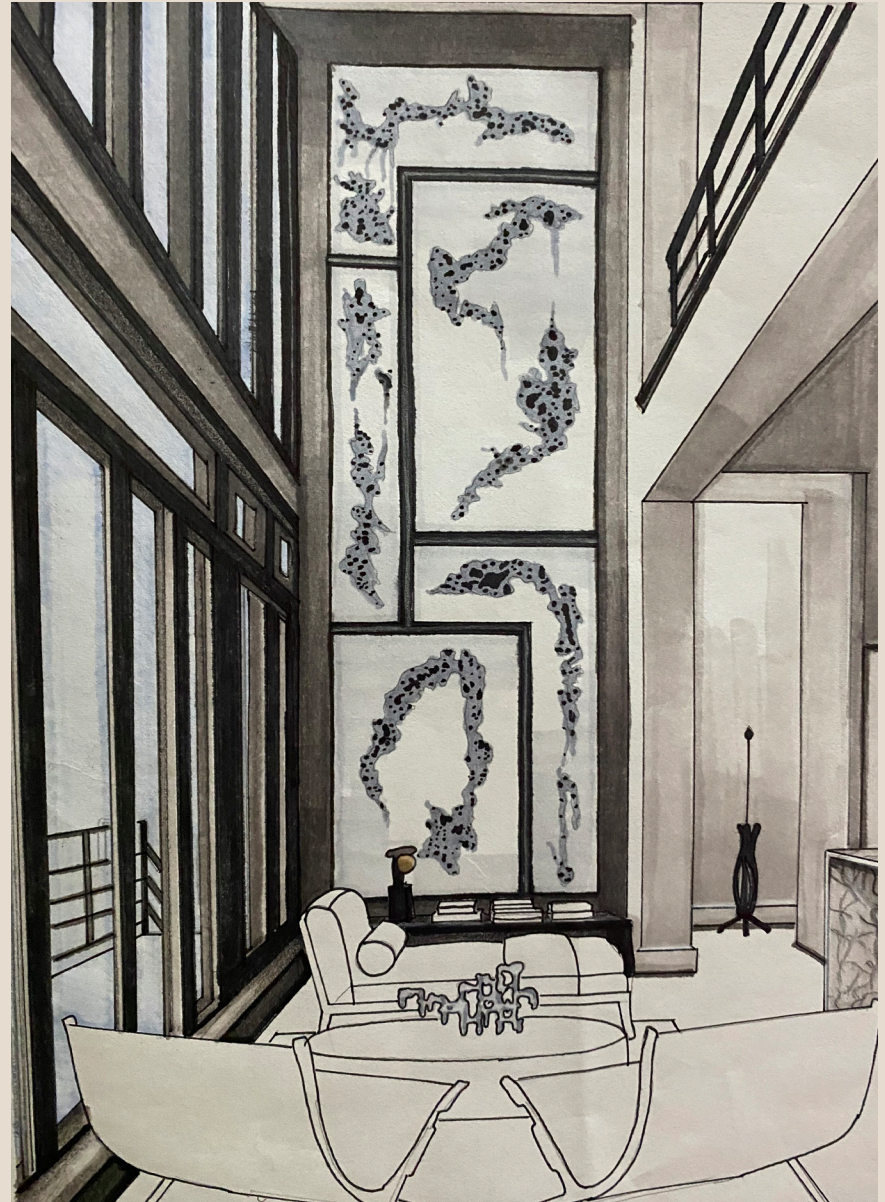


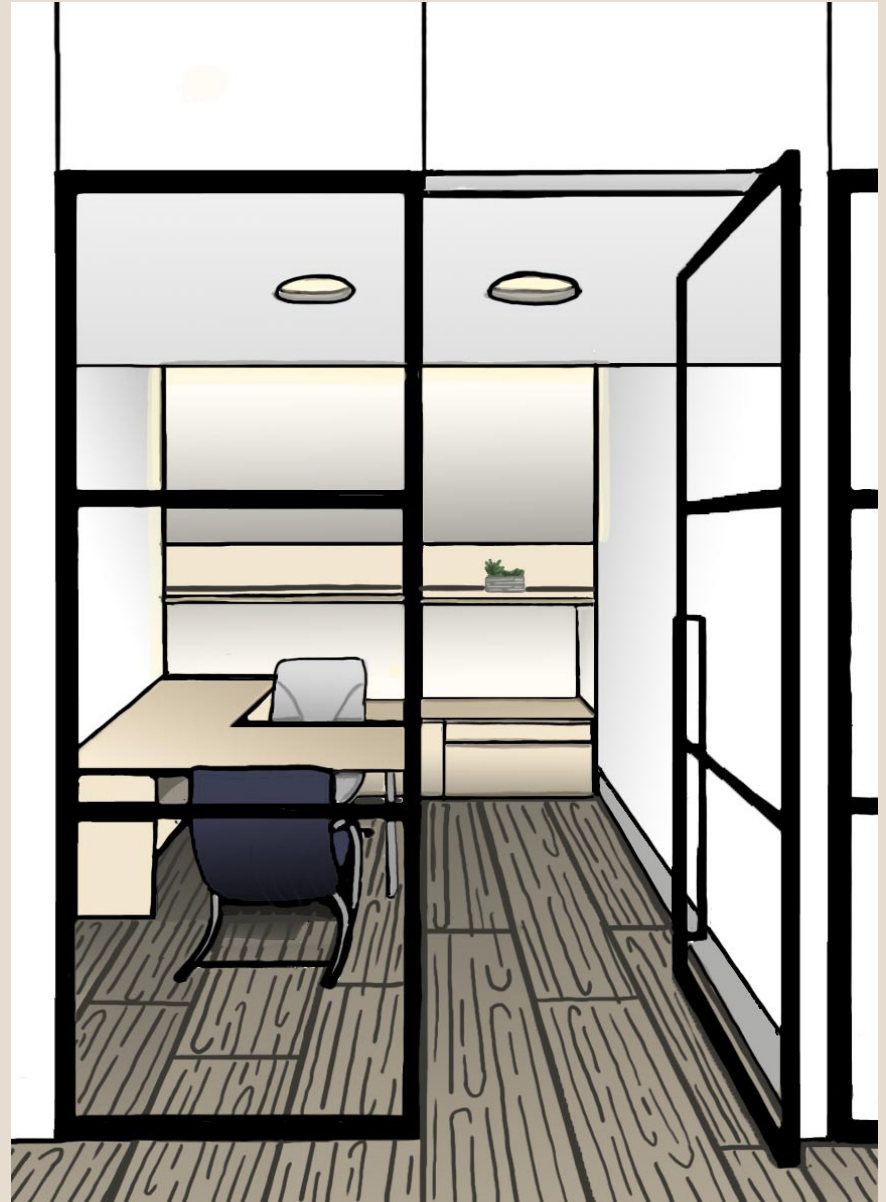




P e r s p e c t i v e
D r a w i n g s











C o n c e p t
B o a r d s



Bringing GREAT IDEAS to the Board

Concept Board



Furniture and Finishes

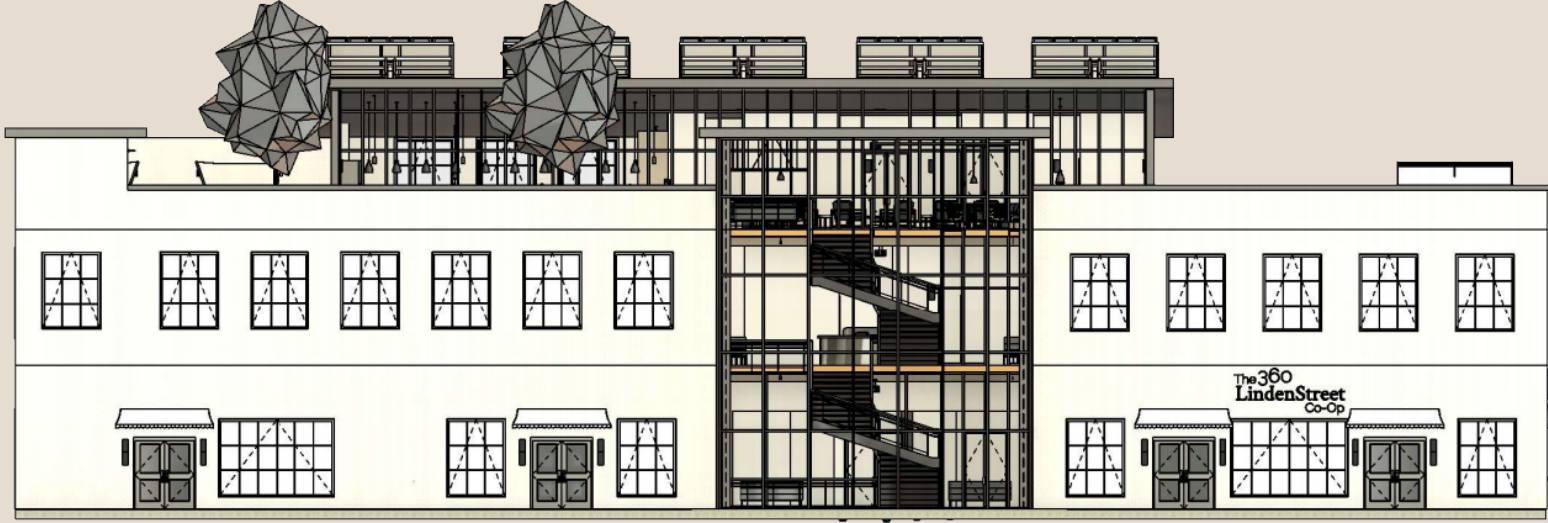
				
Seafoam 75 41 50 14 69 115 115 #457373z	Viridian 58 32 47 4 115 144 134 #739086	Foam 36 16 22 0 164 189 190 #A4BDBE	Rosy 16 27 25 0 213 185 177 #D589B1	Concrete 14 11 12 0 216 216 214 #D8D8D6



CONCEPTUAL FEATURES



PERIWINKLE	ICE	LIME LITE
10 26 4 0 224 192 211 #E0C0D3	27 15 5 0 182 199 221 #B6C7DD	26 0 17 0 182 242 225 #B6F2E1



NOTEWORTHY PROJECTS

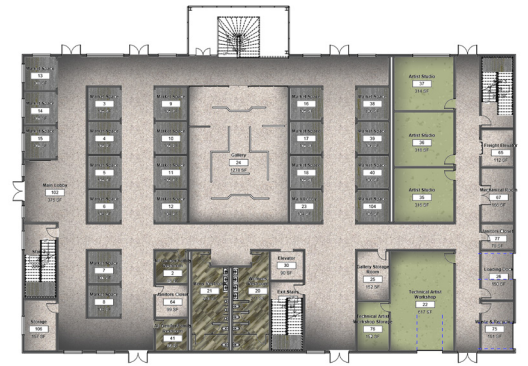
360 Linden

Fort Collins, Colorado



360 Linden

Fort Collins, Colorado



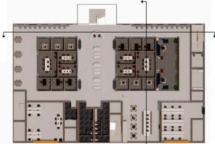
SECTION CUT - WEST



LEVEL ONE



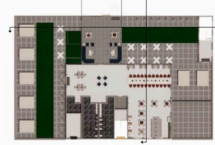
SECTION CUT - SOUTH



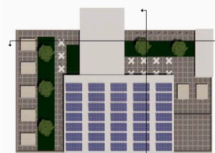
LEVEL TWO



LEVEL TWO KITCHEN + BREAKROOM



LEVEL THREE



ROOFTOP

Architecture

The architectural features, windows, and overall proportion needs further development. The building's functionality includes circulation, with well-designed spaces that take the end use into account, while also maintaining flexibility for future use and renovations.

Engineering

Several systems, including geothermal for heating and cooling, work in conjunction with solar panels, a ventilation tower, an efficient lighting system, and other passive systems to create a sustainable whole building. To evaluate our buildings performance in terms of these systems, further testing and building development would be required.

Market Analysis

360 Linden's exterior aesthetic coordinates with that of other buildings in the River Downtown Redevelopment Zone District, and contributes to the appeal of the downtown area. While the City of Fort Collins supports and encourages sustainable projects of this nature, at this current time we are unable to provide an accurate cost-analysis to determine the cost-effectiveness of our design.

Durability + Resilience

Our project incorporated sustainable and durable materials, furniture, and fixtures into our project, keeping high use and durability in mind as selections were made. Our structural materials were also chosen with care and longevity in mind, while also striving to attain a high level of sustainability.

Embodied Environmental Impact

Needs further testing and evaluation to accurately determine the embodied environmental impact of our building, however we did make an effort to keep floor plans open so they may be adaptable in future renovations.

Integrated Performance

Our project incorporated passive elements such as light shelves, stack effect through ornamental glass stairwell, opportunities for cross-ventilation, bioswales, green walls, rooftop photovoltaics.

Occupant Experience

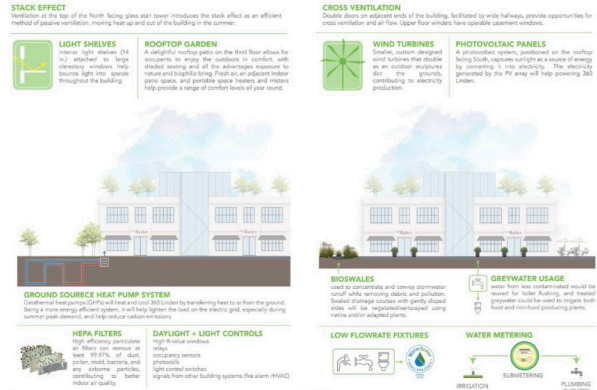
Our building offers spaces that can accommodate a variety of activities, from large gatherings to solo work sessions, in a comfortable and inviting indoor/outdoor environment.

Comfort + Environmental Quality

With lighting, HEPA filtered ventilation, and thermal comfort controls, the interior experience provides flexibility and promotes the health and wellbeing of the occupants. SIPs panels provide excellent insulation for the building. Daylighting, quality views, and the rooftop patio provide occupants with access to nature and biophilia.

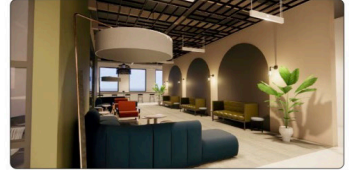
Energy Performance

LEDs and an efficient lighting solutions help to minimize energy consumption in the building, while PVs on the roof contribute to energy production. Low-flow and efficient plumbing fixtures and a grey water recycle system help to minimize water consumption. To evaluate our buildings Energy Performance, further testing and building development would be required.



LEVEL THREE COWORKING

LOUNGE COWORKING



Kristen Lunsden
Interior Concepts
+ Lighting

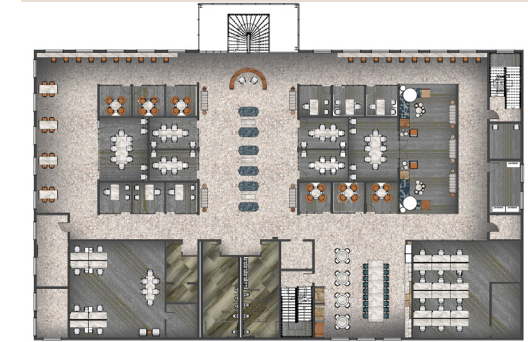
Jasmine Nikki
Revit Manager
+ Assistant Lead

Makenzie Quick
Codes Manager
+ FF&E

Katie Redman
Team Lead
+ Structure

Ariane Urresti
Interior Concepts
+ Materials

FORCES OF NATURE



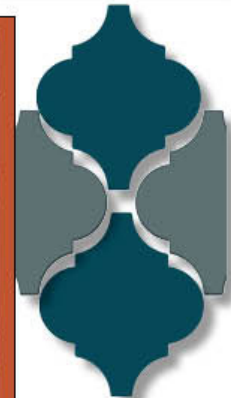


Linden Street Co-Op

Fort Collins, Colorado



Whale: #024949	Deep Orange: #BF5B01	Beige: #D9B29C	Amber: #A66249	Ruby: #BC0303
--------------------------	--------------------------------	--------------------------	--------------------------	-------------------------



Daltile: Commissary

Daltile: Quartetto

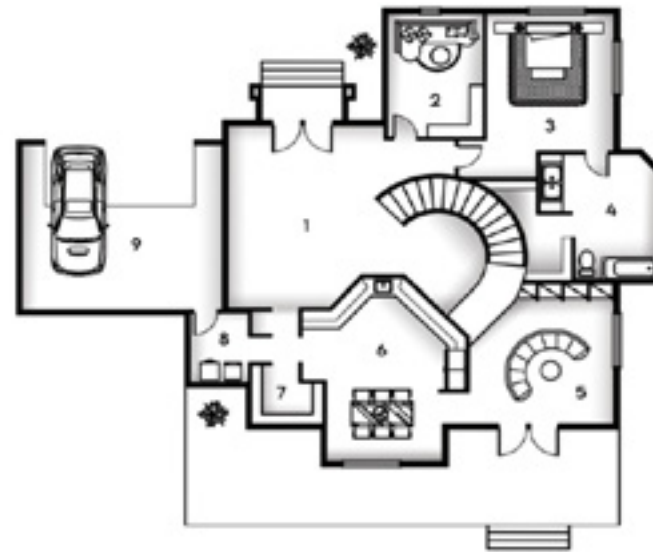


The Bleu family is a young and spirited family who advocate for a life of peace, love, and freedom. They are moving together to Fort Collins, Colorado from Scottsdale, Arizona. They live through life in a breeze and simply focus on their love for the environment, art, animals, and spirituality.

BLEU FAMILY



BLEU RESIDENCE



1. ENTRY AND FOYER
APPROX. 504 SF
2. LIBRARY
APPROX. 154 SF
3. MASTER BEDROOM
APPROX. 252 SF
4. MASTER BATH
APPROX. 182 SF
5. LIVING ROOM
APPROX. 256 SF
6. KITCHEN AND DINING
APPROX. 351 SF
7. PANTRY
APPROX. 46 SF
8. LAUNDRY
APPROX. 42 SF
9. GARAGE
APPROX. 370 SF

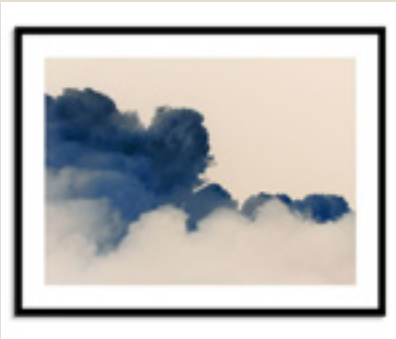


BLEU RESIDENCE



10. GUEST BEDROOM
APPROX. 156 SF
11. GUEST BATH
APPROX. 93 SF
12. KIDS BEDROOM
APPROX. 138 SF
13. SHARED BATH
APPROX. 81 SF
14. NURSERY
APPROX. 120 SF





About:

At the intergenerational daycare center called Community at the Heart is a space that will be created in which the young and old will thrive. By creating a space and programming that space with various corresponding activities will allow children and seniors to interact. This opportunity for children and senior services will in a way create a long and lasting impact on the community.

The daycare center will be designed and built to serve all ages featuring spaces such as a arts and crafts room, gymnasium, park/playground, community kitchen and a game room. It is important that the spaces encourage interaction. This means that the spaces will have more of a sociopetal arrangement. The aesthetic design will be modern and simplistic with the use neutral colors with various pops of color to create contrast and natural materials.



Community at the Heart

Inspiration:

Like a walk in the park, this space will feel bright and refreshing. Balance and contrast will be seen through the use of neutral colors and materials found in nature along with pops of bold color and simple geometry. The design will accomodate ADA standards and have a open layout. Community at the Heart is a space that is inspired by nature with a mid-century modern twist.



COMMUNITY AT THE HEART INTERGENERATIONAL DAYCARE



1. RECEPTION

APPROX. 860 SF

2. NURSE'S STATION

APPROX. 306 SF

3. ADMIN OFFICE

APPROX. 416 SF

4. BREAK ROOM

APPROX. 224 SF

5. CAFFETTERIA

APPROX. 588 SF

6. ELDER ROOM 1

APPROX. 390 SF

7. BATHROOM

APPROX. 76 SF

8. ELDER ROOM 2

APPROX. 418 SF

9. TODDLER ROOM 1

APPROX. 560 SF

10. TODDLER ROOM 2

APPROX. 403 SF

11. GAME ROOM

APPROX. 676 SF

12. NURSERY 1

APPROX. 483 SF

13. NURSERY 2

APPROX. 540 SF

14. STORAGE

APPROX. 144 SF

15. MECHANICAL

APPROX. 76 SF

16. PLAYGROUND

APPROX. 672 SF



INTERGENERATIONAL DAYCARE BREAK ROOM



WINDWARD ISLAND VISITORS CENTER



SW 6519
Hinting Blue
Interior / Exterior
Location Number: 185-C1

SW 2820
Downing Earth
Interior / Exterior

SW 7562
Roman Column
Interior
Location Number: 263-C1



KIRSTEN LUMSDEN
INTD 276
SPRING 2020
RATHMANN

WINDWARD ISLAND VISITORS CENTER

1. Coffee Shop

APPROX. 1088 SF.

2. Tourist Information Center

APPROX. 210 SF

3. Food Court

APPROX. 555 SF.

4. Convenience Store

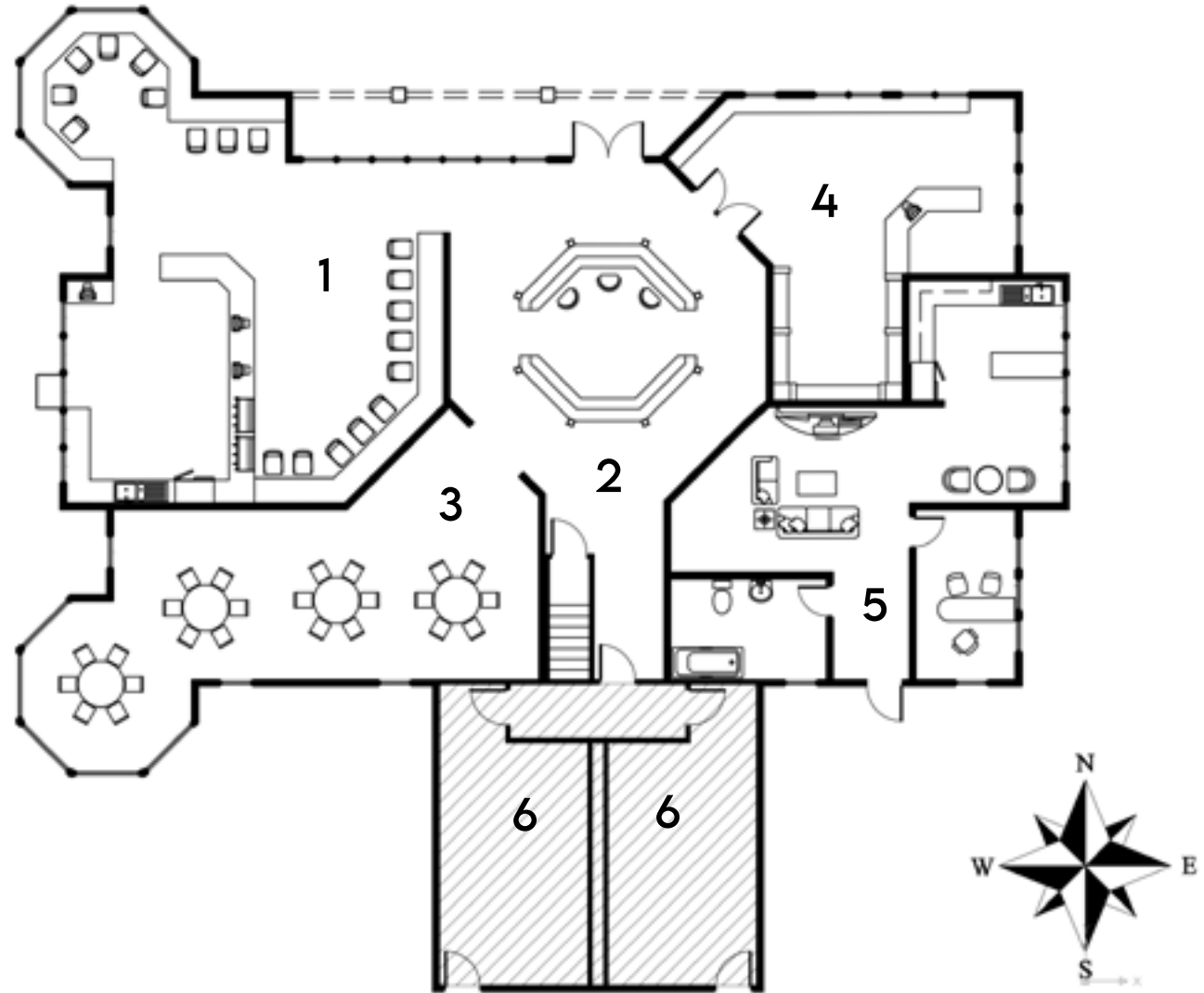
APPROX. 475 SF

5. Residential Suite

APPROX. 720 SF.

6. Public Restrooms

APPROX. 560 SF.



GREELEY-WELD
HABIT FOR
HUMANITY

COMMUNITY



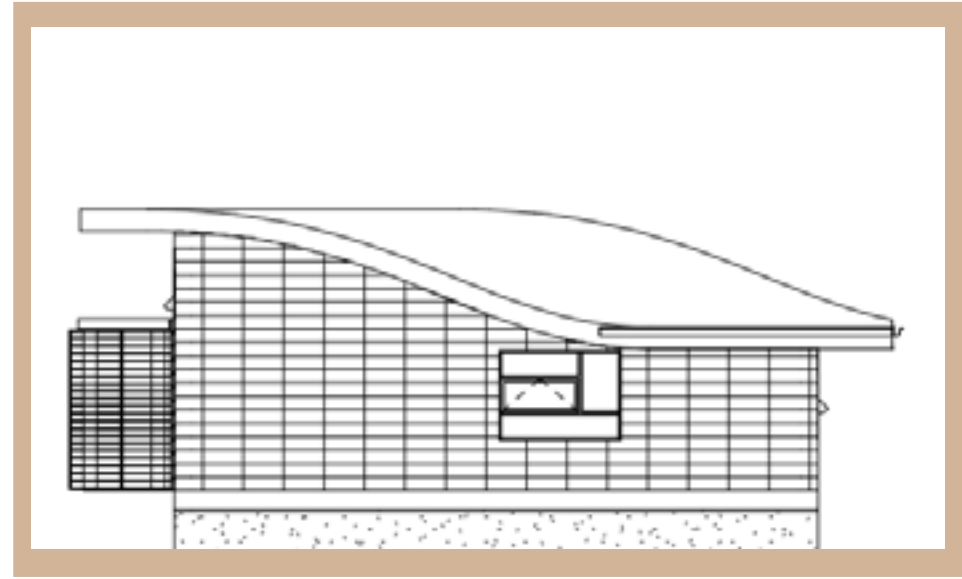
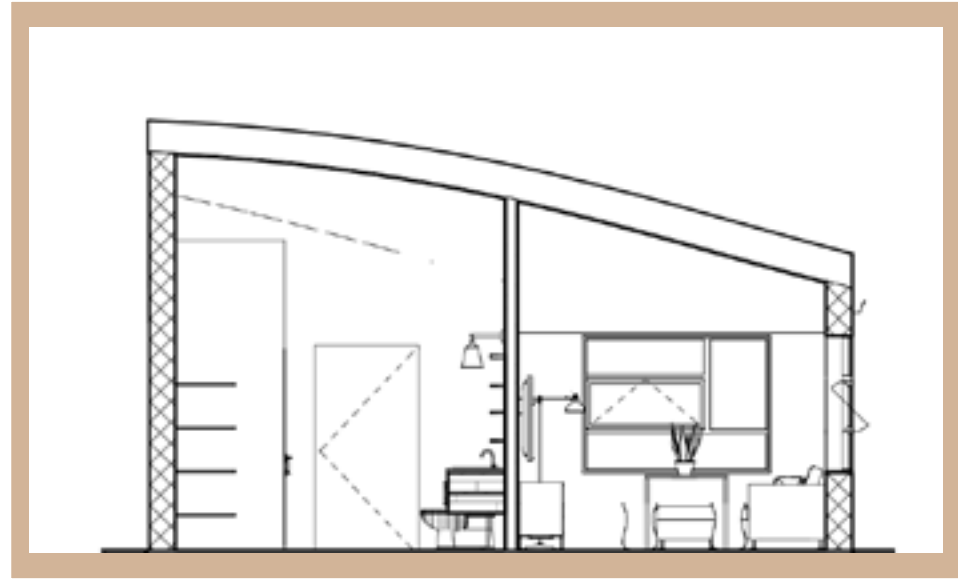
& .47th Ave The Hill 'N' Park community is a newly chosen home development site located at homes, some of which are 759 The current community contains .80631 49th St., Greeley, CO abandoned and or distressed. These current conditions pose health and safety concerns to the low-income population who currently lives here. The goal of this proposed design revitalization .is to provide safe, desirable, and affordable housing

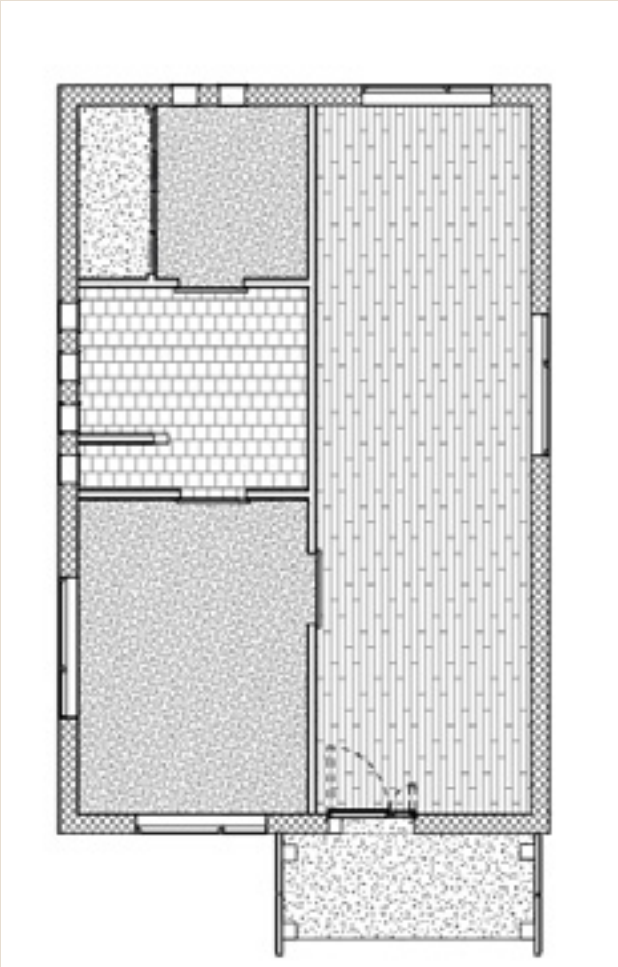
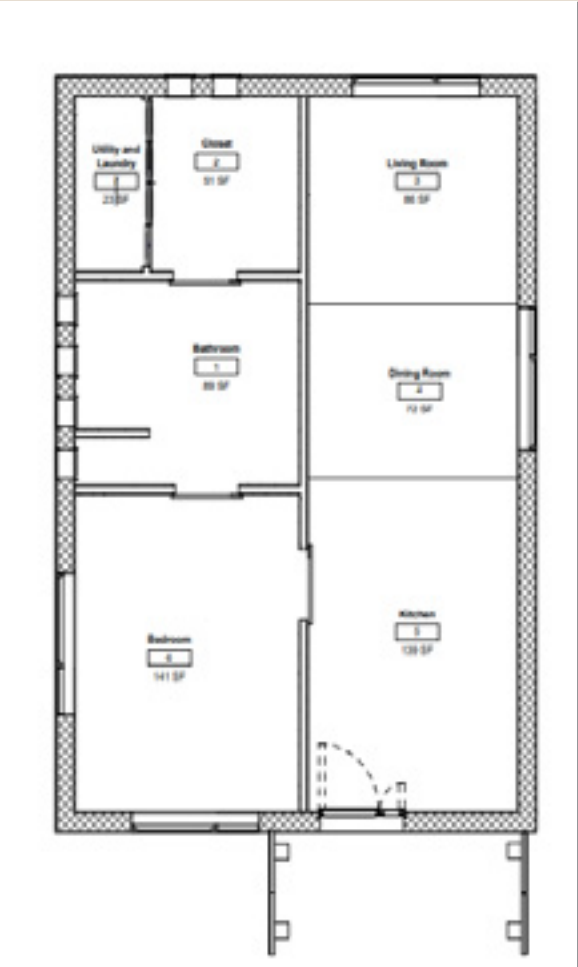
HILL 'N' PARK

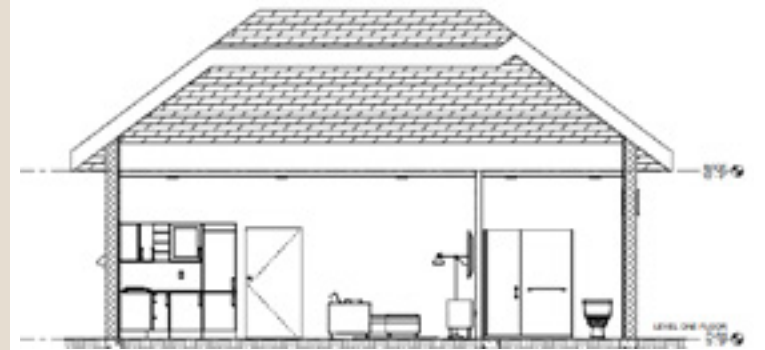
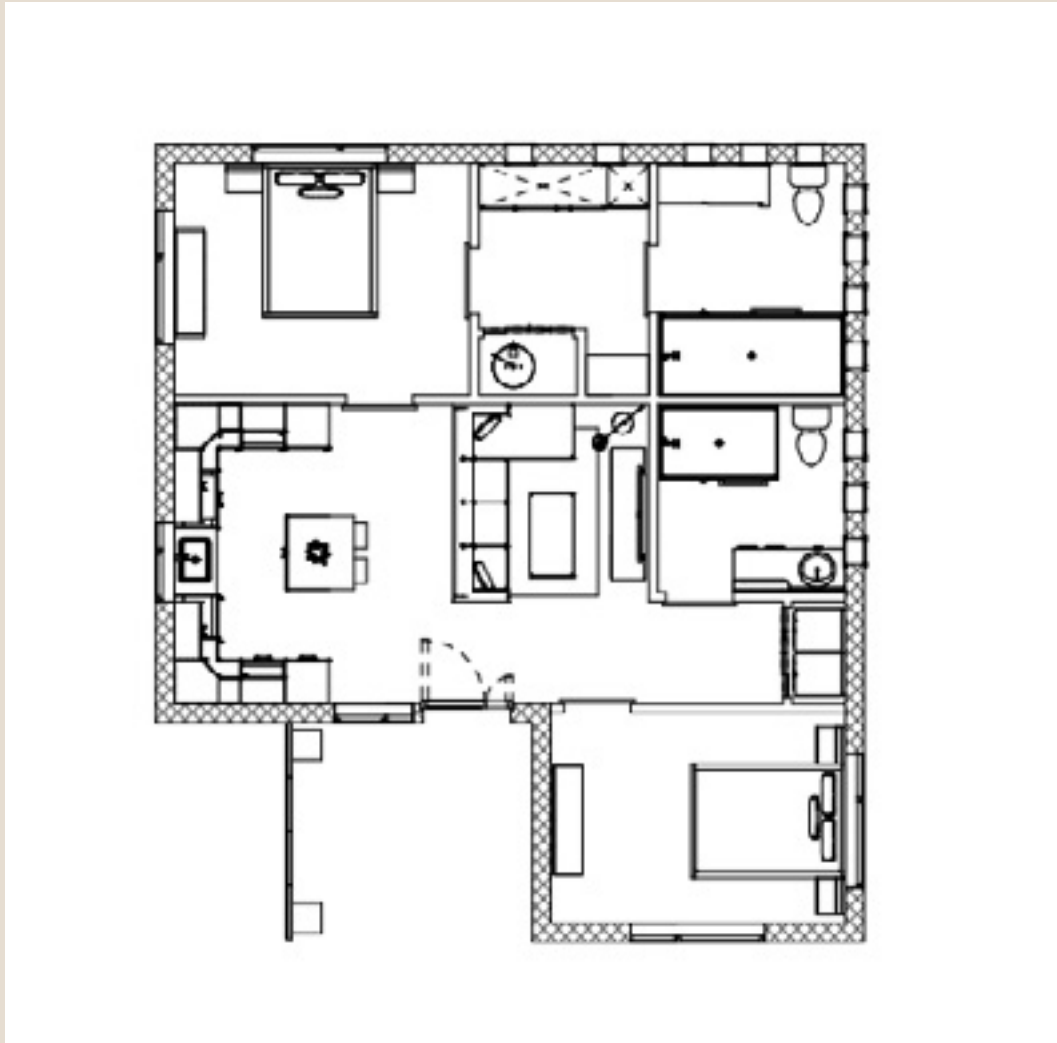
2020

A Modern
AND Contemporary
approach to affordable

and inclusive design









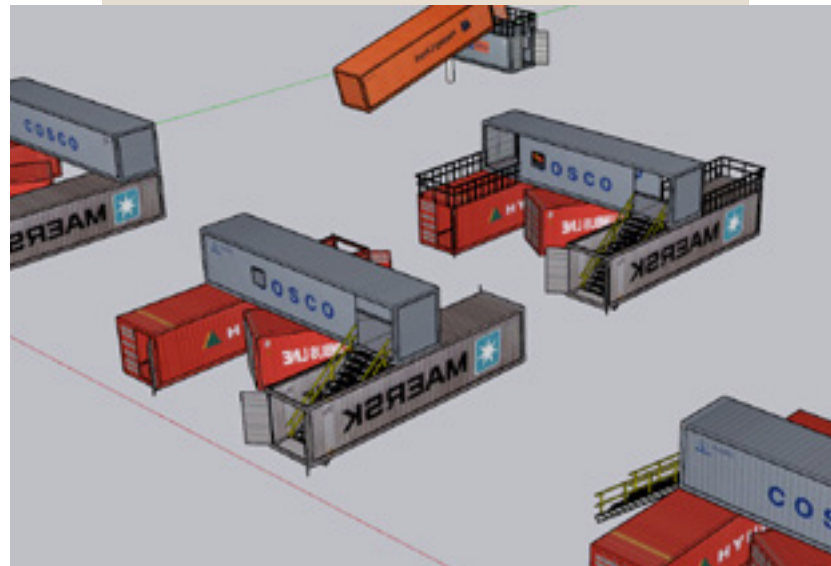
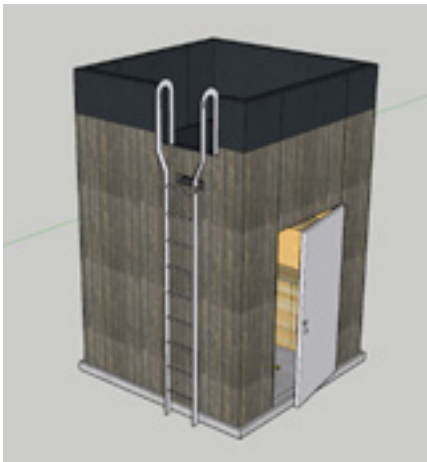
R e a l W o r l d
D e s i g n i n g





GoAirheads

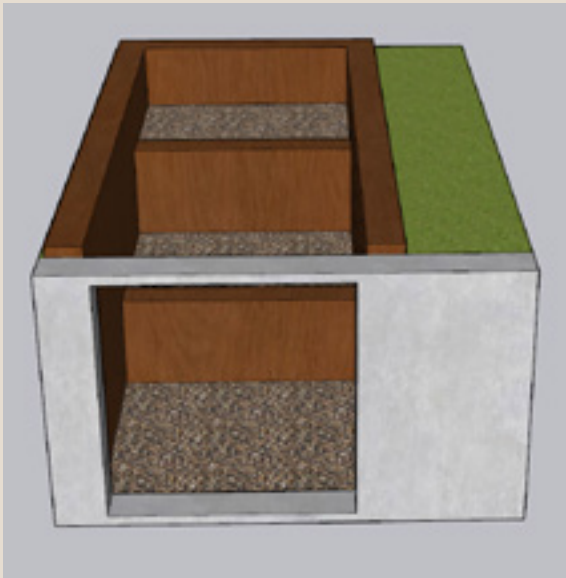
Container Structure Concepts



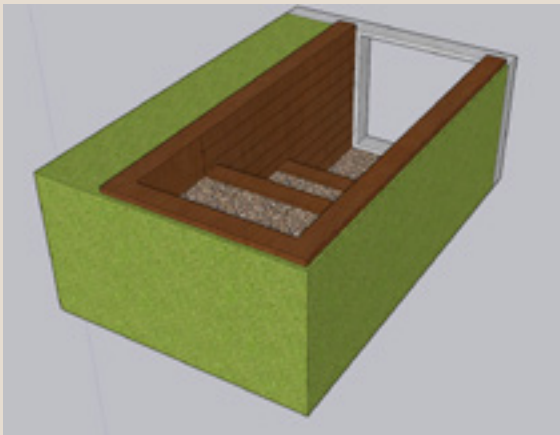


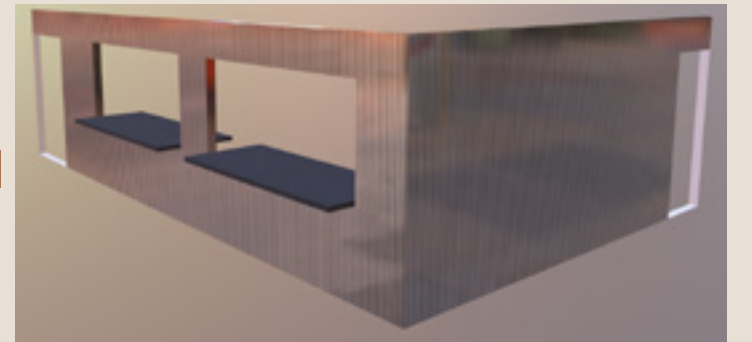
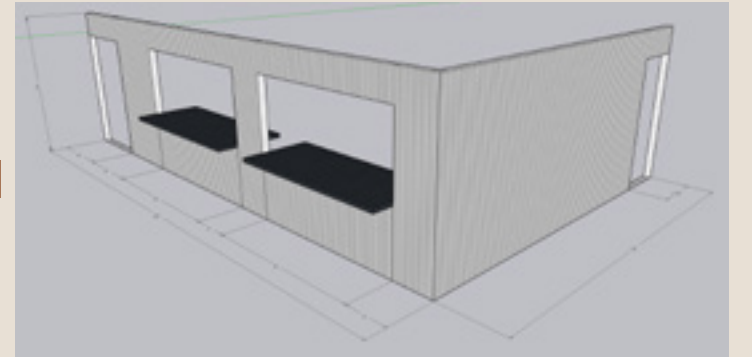
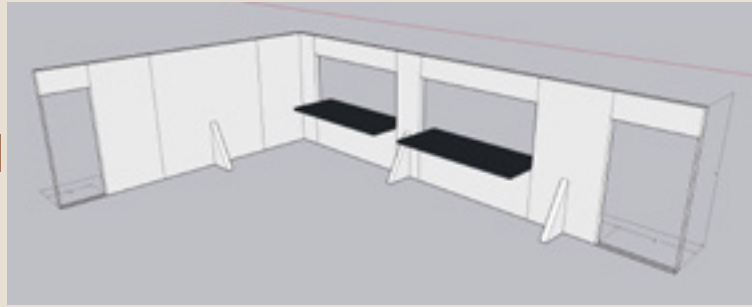
CLICK TO VIEW VIDEO ONLINE

www.fb.com/stormheart.construction



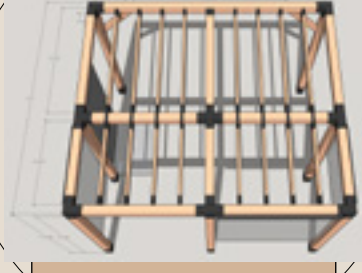
W i n d o w W e l l
E g r e s s





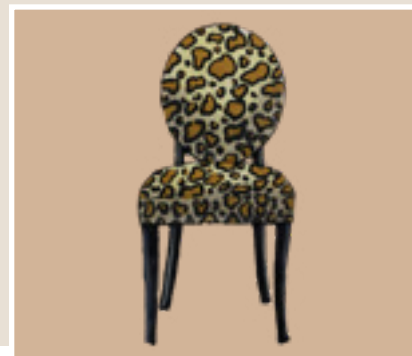
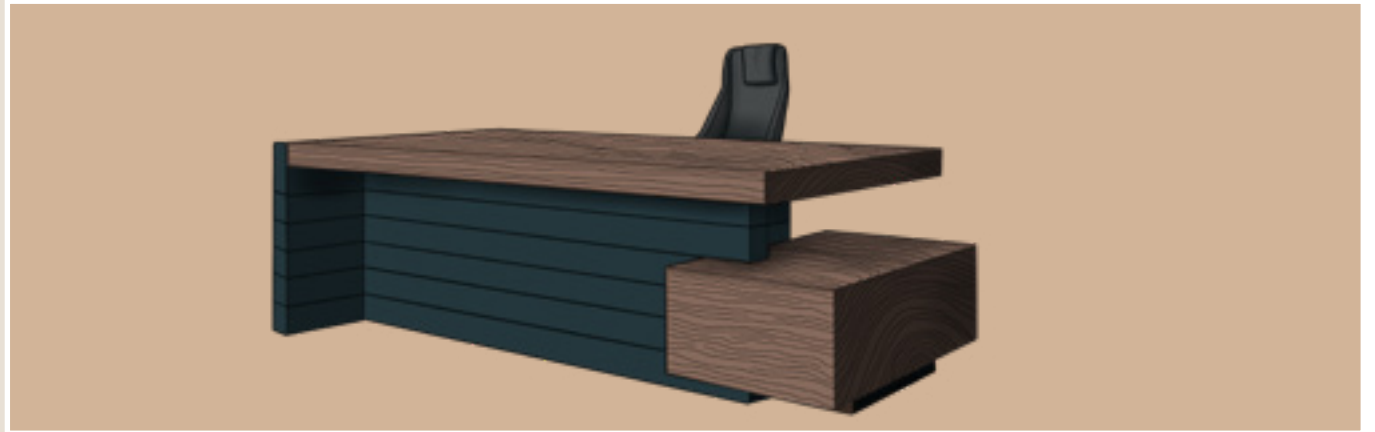
Spectra Warehouse
Layout

Mizer Family Pergola Design



KML INTERIOR DESIGN

THE ART OF CREATING
STYLISH FURNITURE





PORTFOLIO